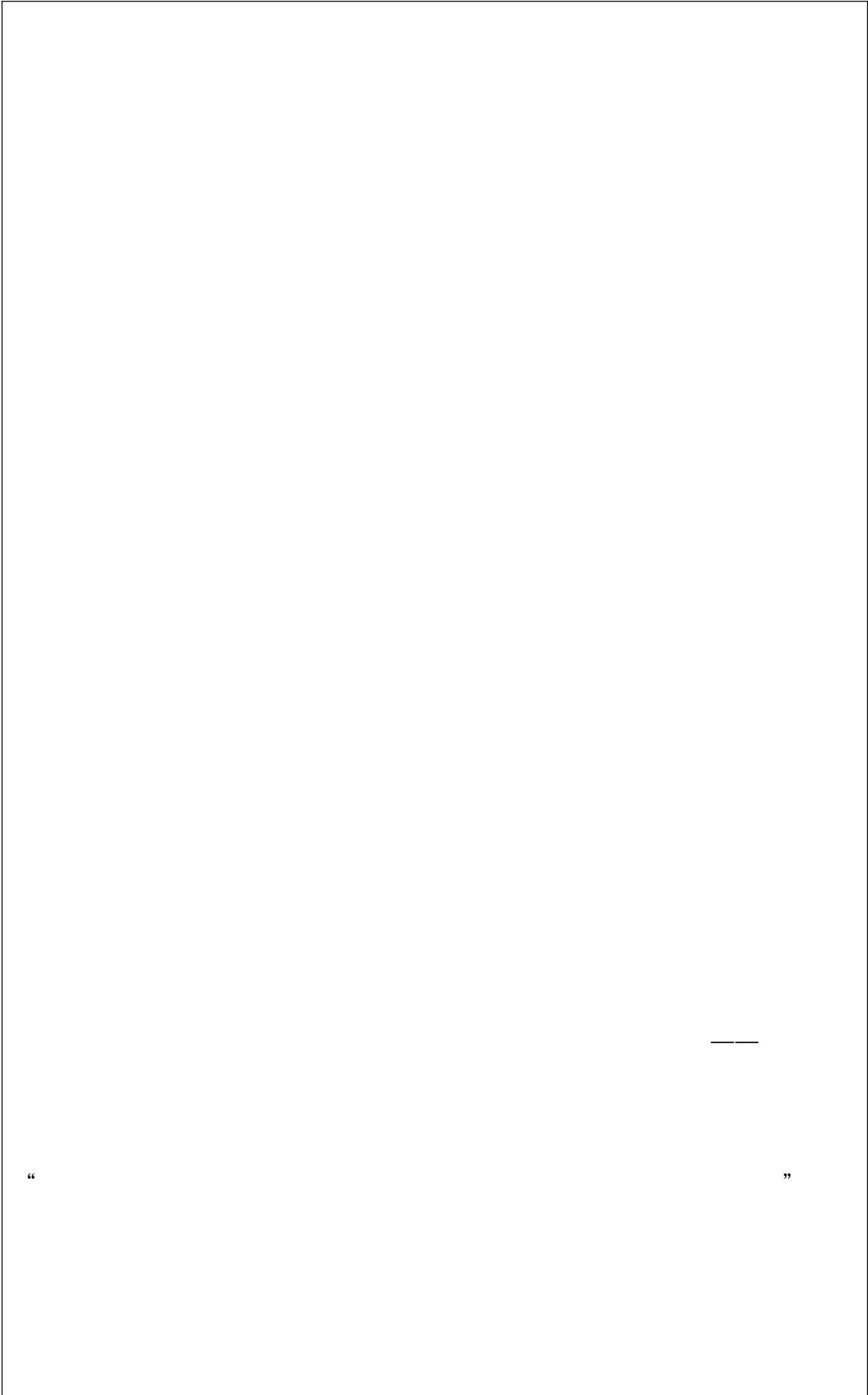


--	--

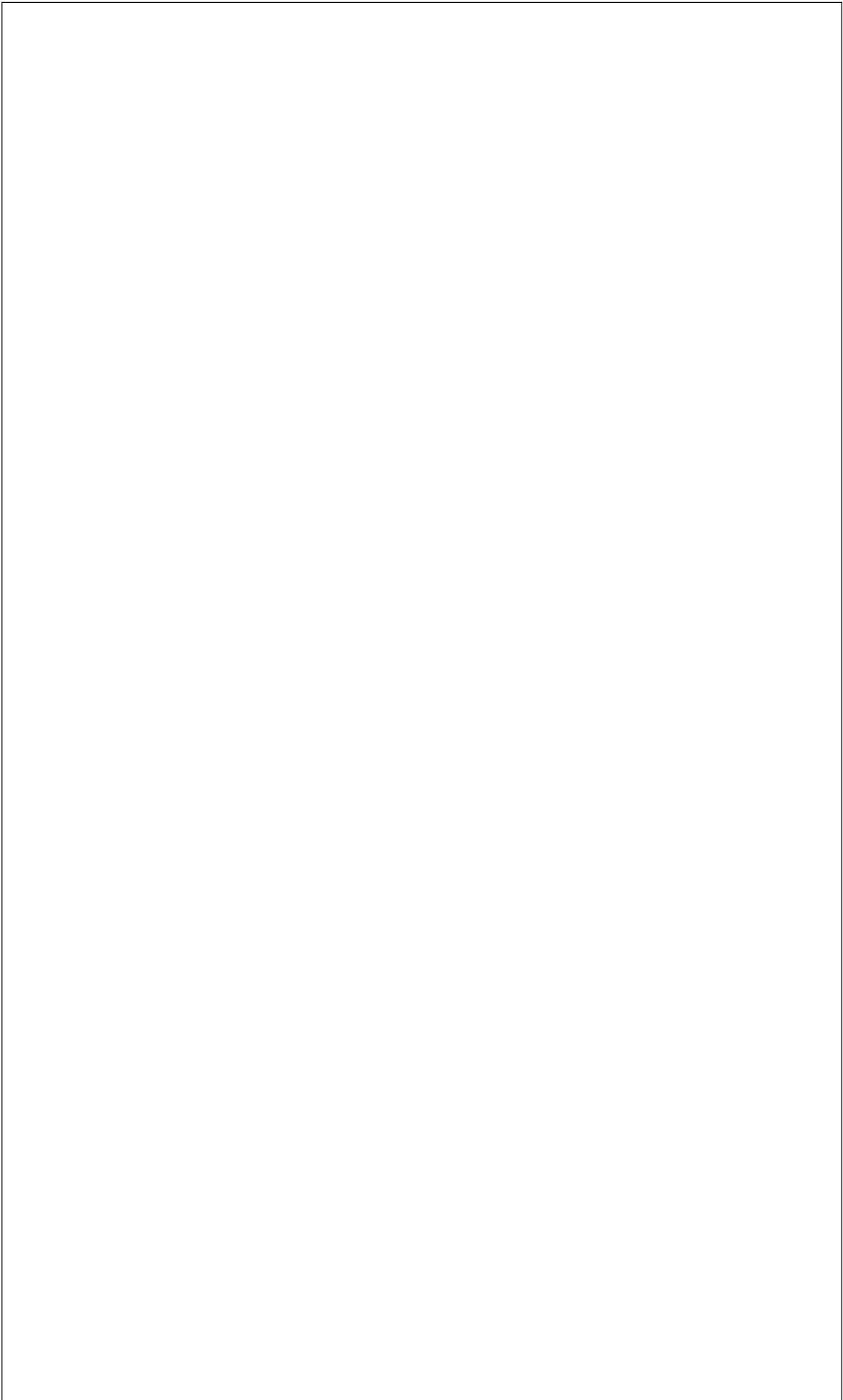
--	--



“

”

—



?
ÔFJ
W-4Ö

4Ö
"•?¥€ ...} ‡

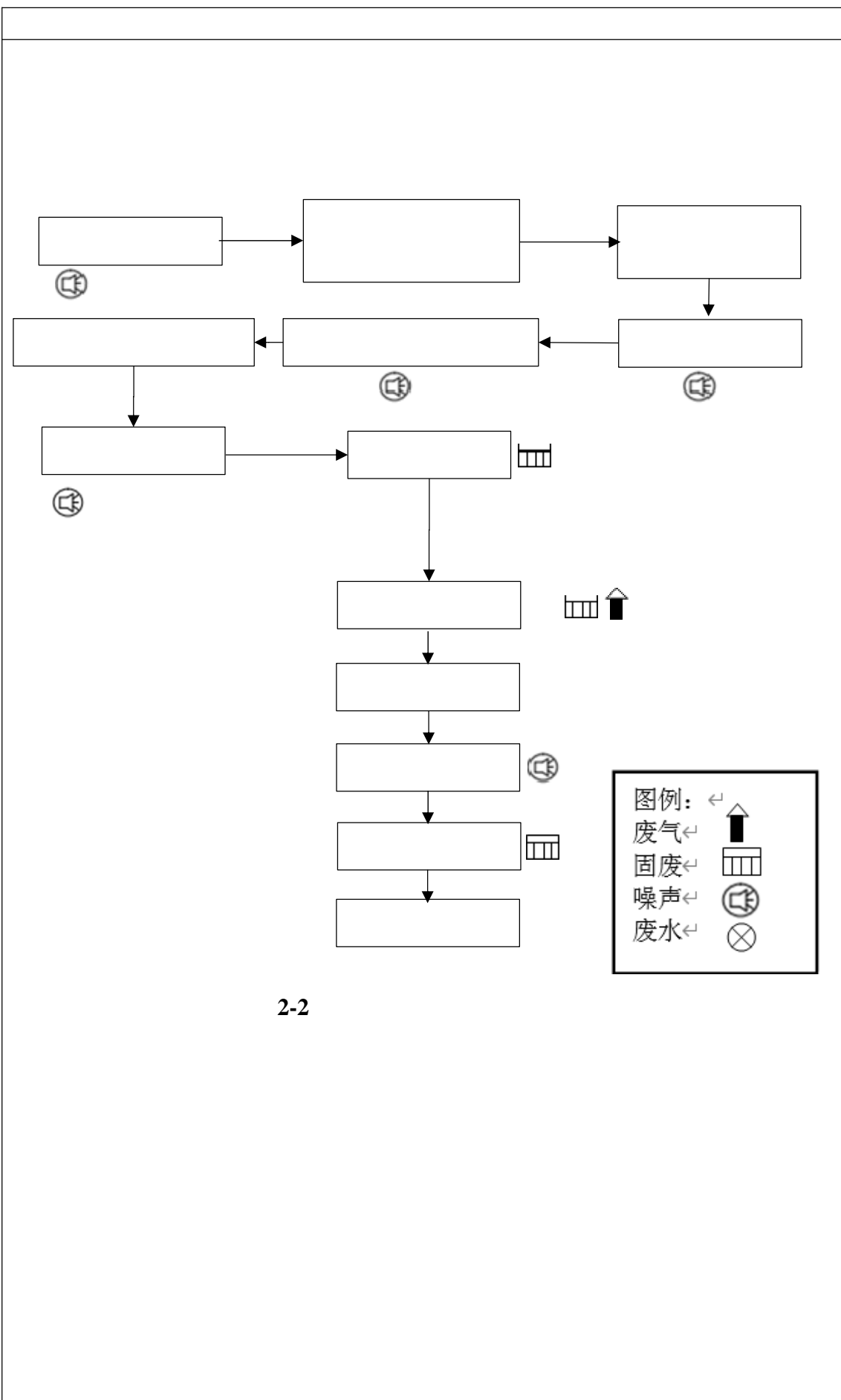
- %o^b— &)0 "•?— ÓŠiÖđ
6| BÓ &³ -L' ° óC‡ — 1qr\$Đ \ 0F F

6h @| óRW — uÆ`>Óî ì
m-Ÿ

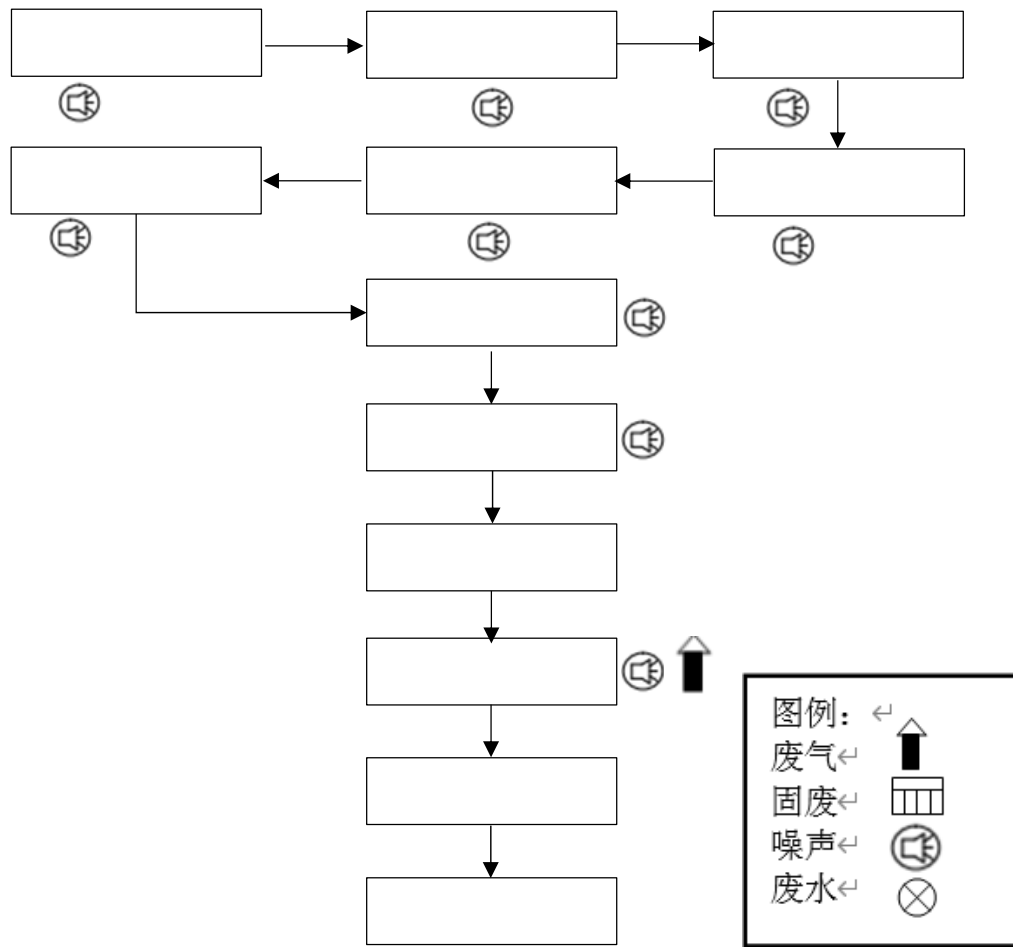


2-1

t/a



2-2



2-3

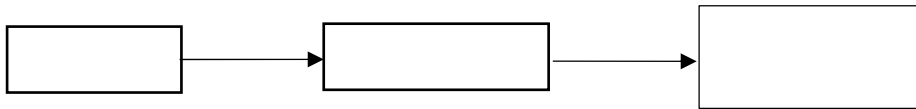
“ ”

“ ”

2-6

3.1

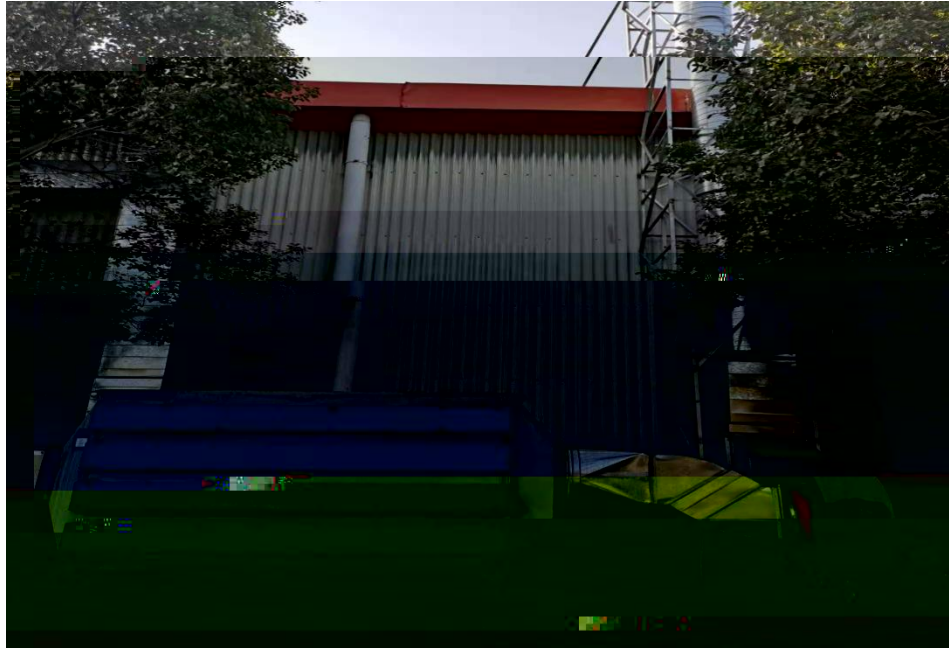
1



3-1

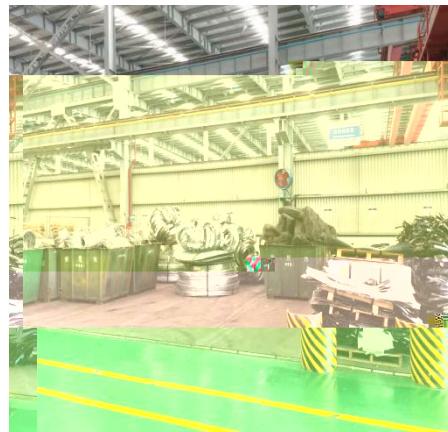
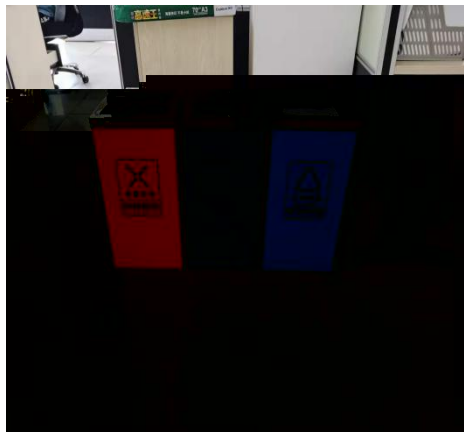


2



3

4



3-1

()

pH COD_c BOD_5
SS $\text{NH}_3\text{-N}$ +

4.1

1

1255

JQ1-JQ6

2

3

1

SO₂ NO₂ PM_{2.5} CO 95% Q₃ 8 90%

GB3095-2012

PM₁₀

GB3095-2012

Q 11

3

GB3096—2008 2

1

2

4 2

1

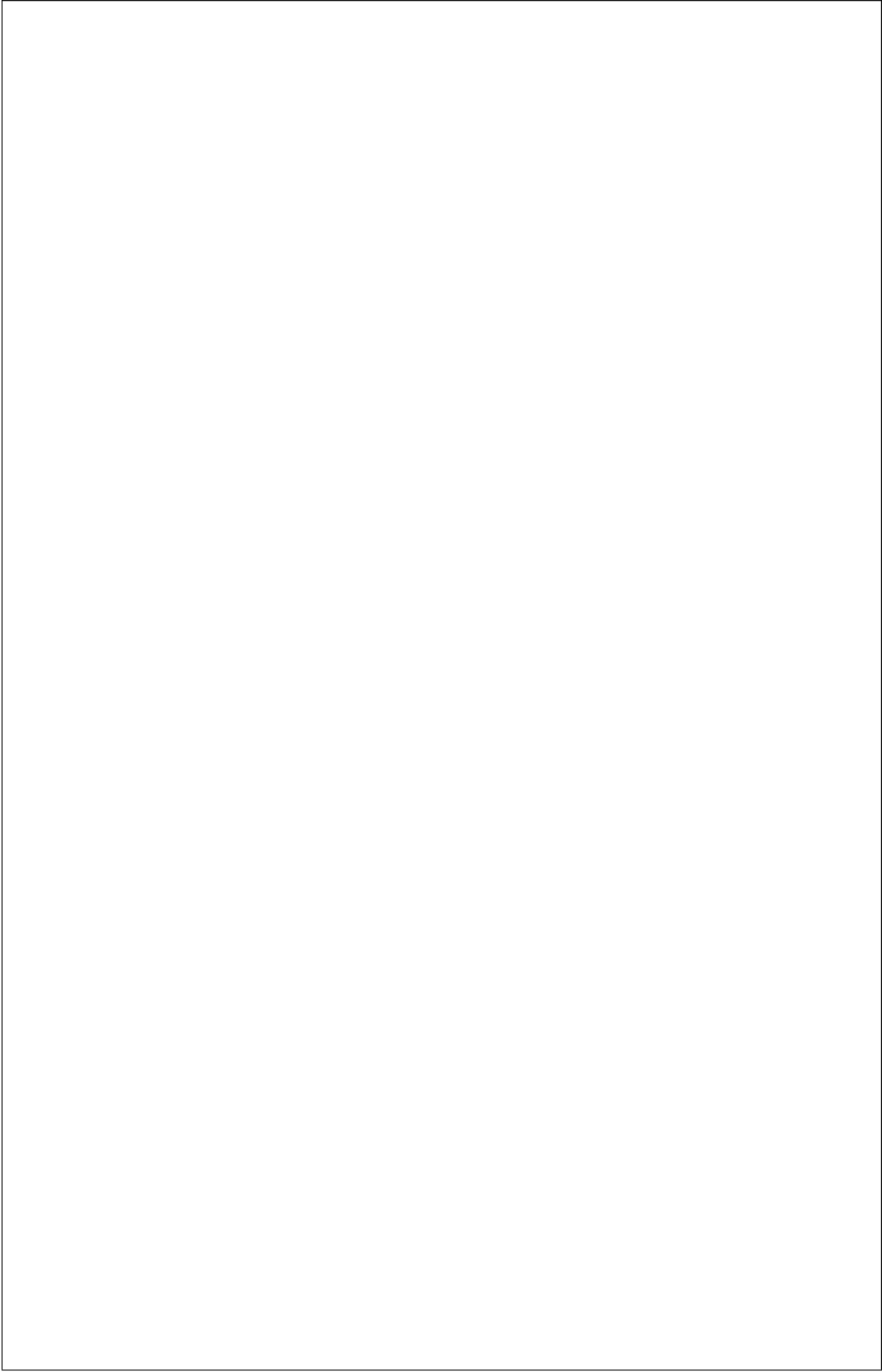
1255

250

250

2

“ ”



6.1

6-1

6.2

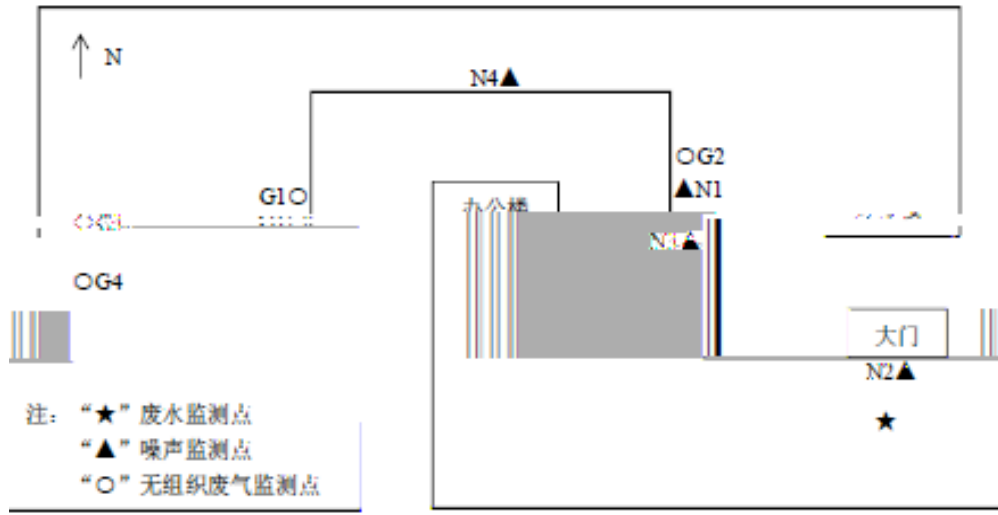
6-1

6.3

6-2

--

6-3



6-1

7.1

				%

7-2

	leq(A) dB(A)				8"	

8.1 “ ”

8.2

8.3

